

The background of the entire page is a photograph of a two-story brick building. The building has a teal-colored roofline and large, dark-framed windows on the upper level. The ground floor features a recessed entrance with a brick pillar on either side. The address number "8451" is mounted above the glass entrance doors. The sky is clear and blue.

8451 Boulder Court

Walled Lake, MI 48390



8451 BOULDER COURT

WALLED LAKE, MI 48390

1ST AND 2ND FLOOR OPTIONS **AVAILABLE**

- 700-2,081 square feet available
- In-suite bathrooms
- Heated Garage Parking
- Storage Available
- Common Area Kitchen and Conference Room
- Ample Parking
- Outdoor Patio
- Secluded quiet location with wooded views from every window

- **Population**
1 Mile: 3,794
3 Mile: 50,605
5 Mile: 149,747
- **Business**
#of Businesses: 366
of Employees: 3,688
- **Household**
1 Mile: 1,303
3 Mile: 19,475
5 Mile: 59,194
- **Average Household Income**
1 Mile: \$131,321
3 Mile: \$110,632
5 Mile: \$109,956
- **Traffic Count**
Martin Rd & Boulder Court:
27,610

Kevin Tamer

Associate Vice President
Office: 248-710-8000
Cell: 734-624-3729
knt@team-core.com

Samuel McLean

Associate Vice President
Office: 248-710-8000
Cell: 248-935-7237
sam@team-core.com

Jeremiah Preston

Senior Vice President /
Associate Broker
Office: 248-710-8000
Cell: 248-421-9349
jhp@team-core.com



Kevin Tamer

Associate Vice President
Office: 248-710-8000
Cell: 734-624-3729
knt@team-core.com

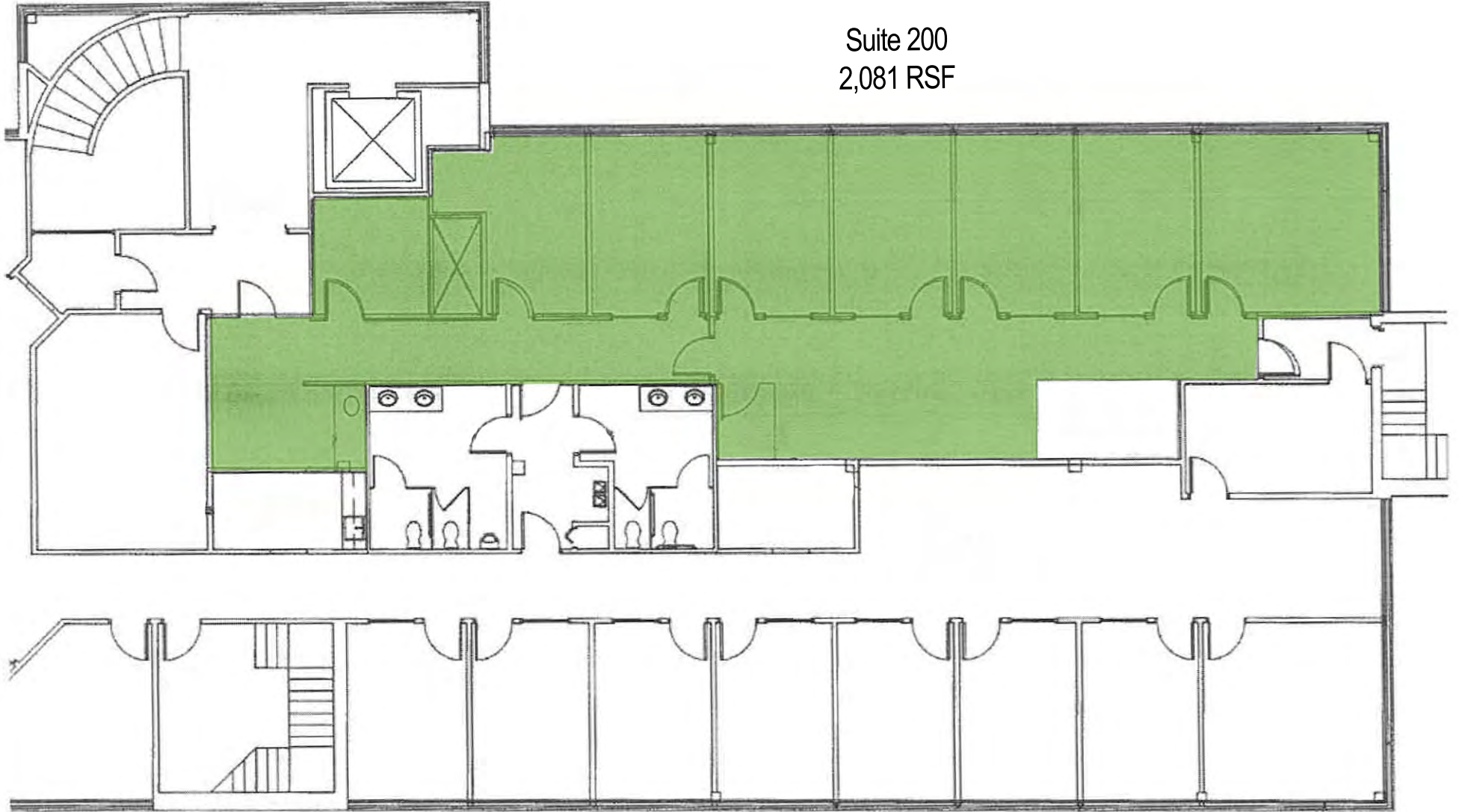
Samuel McLean

Associate Vice President
Office: 248-710-8000
Cell: 248-935-7237
sam@team-core.com

Jeremiah Preston

Senior Vice President /
Associate Broker
Office: 248-710-8000
Cell: 248-421-9349
jhp@team-core.com

Suite 200
2,081 RSF



DO NOT SCALE



8451 Boulder Court
Walled Lake, MI 48390

For More Information Please Call:
248.710.8000

