



1055 W MAPLE ROAD

CLAWSON, MI 48017

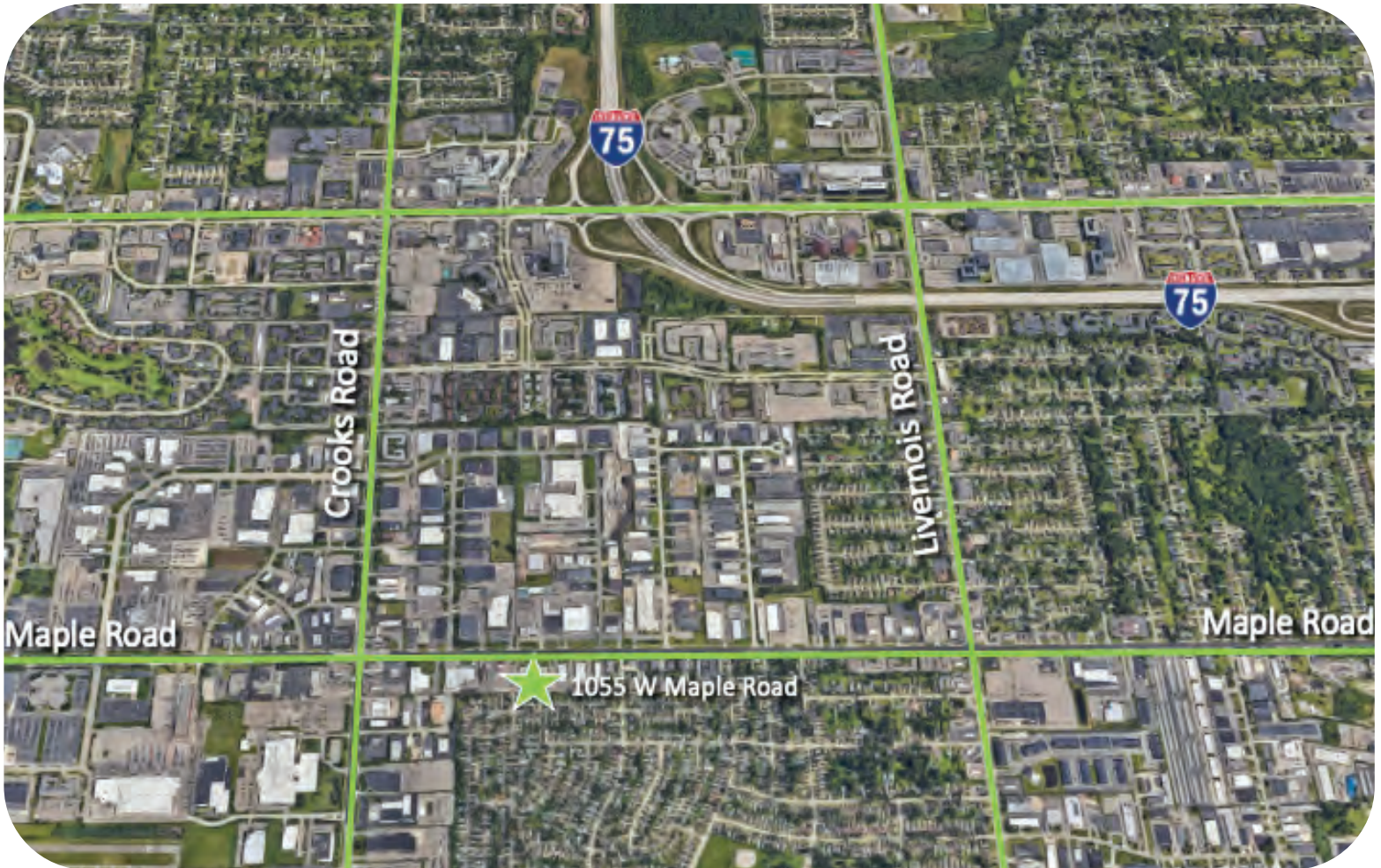
OFFICE FOR LEASE/SALE

- Outstanding location at W. Maple and Crooks Road
- Building was completely renovated in 2017
- Ample parking available on-site
- Potential signage available
- Great for office or medical users
- Combined first floor suite: 7,324 SF
 - Suite 100 A: 2,665 SF
 - Suite 100 B: 4,659 SF
- Second Floor available: approx. 17,250 SF
- \$20.00/SF +Electric
- Sale price: accepting offers

- **Population**
 - 1 Mile: 11,636
 - 3 Mile: 99,531
 - 5 Mile: 273,786
- **Business**
 - #of Businesses: 1,288
 - # of Employees: 14,391
- **Household**
 - 1 Mile: 5,517
 - 3 Mile: 44,541
 - 5 Mile: 114,179
- **Average Household Income**
 - 1 Mile: \$91,518
 - 3 Mile: \$113,466
 - 5 Mile: \$115,564
- **Traffic Count**
 - W Maple Road: 28,190

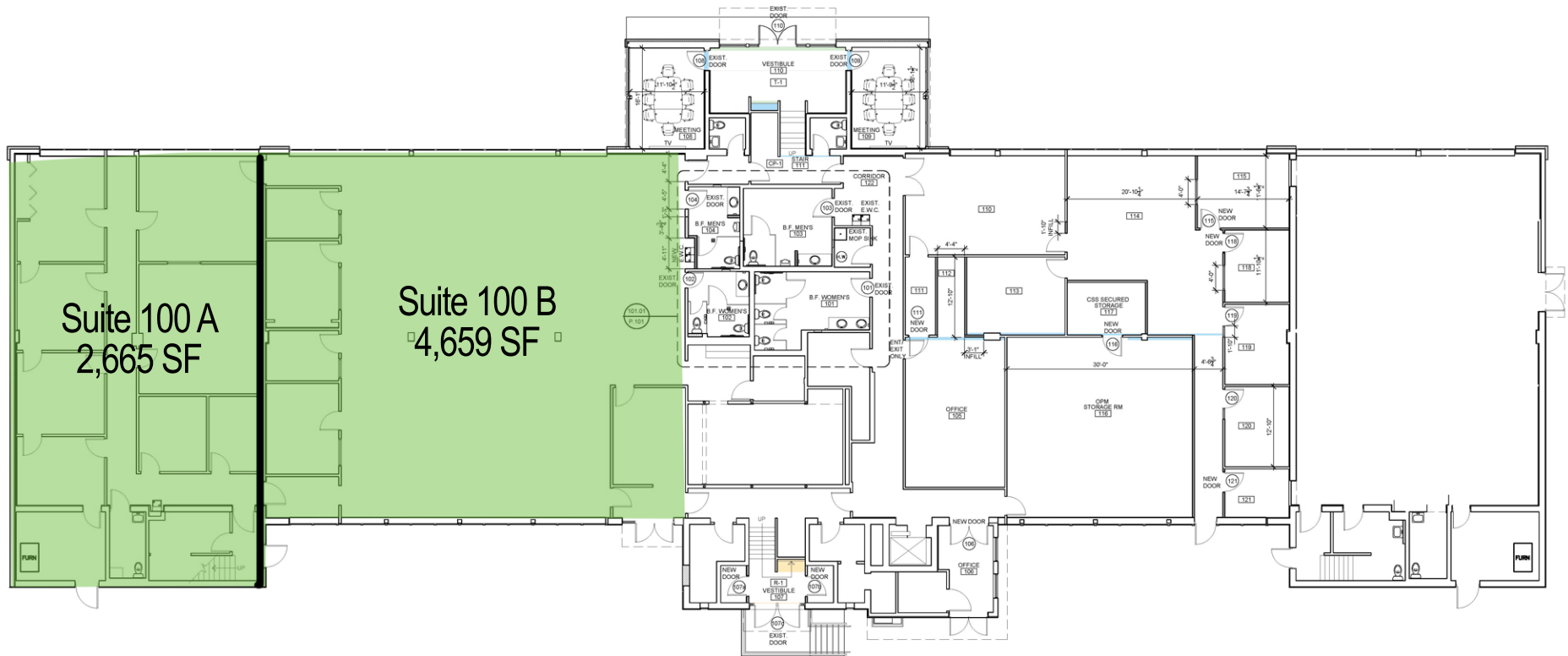
Kevin Tamer
Vice President /
Associate Broker
Office: 248-710-8000
Cell: 734-624-3729
knt@team-core.com

Samuel McLean
Vice President
Office: 248-710-8000
Cell: 248-935-7237
sam@team-core.com



Kevin Tamer
Vice President /
Associate Broker
Office: 248-710-8000
Cell: 734-624-3729
knt@team-core.com

Samuel McLean
Vice President
Office: 248-710-8000
Cell: 248-935-7237
sam@team-core.com



DO NOT SCALE



1055 W Maple Road
Clawson, MI 48017

First Level
2,665 - 7,324 SF
For More Information Please Call:
248.710.8000



